

# CASE STYLES

## OUTLINE DIMENSIONS (inch/mm)

case no.	A	B	C	D	E	F	G	H	J	K	L	M	N	P	Q	R	S	T	wt. grams.	NOTES*
FF55	—	.58	—	2.59	—	—	—	—	—	—	—	—	—	—	—	—	—	—	40.0	A9, D12
FF56	—	.43	—	1.70	.312	—	—	—	—	—	—	—	—	—	—	—	—	—	18.0	A9, D13
FF57	—	.72	—	3.08	.82	—	—	—	—	—	—	—	—	—	—	—	—	—	90.0	A9, D14
FF99	—	.72	—	1.98	.312	—	—	—	—	—	—	—	—	—	—	—	—	—	42.0	A9, D13
FF658	—	.365	—	.85	.312	—	—	—	—	—	—	—	—	—	—	—	—	—	4.3	A32, D13
FF659	—	.365	—	.99	.312	—	—	—	—	—	—	—	—	—	—	—	—	—	5.1	A32, D13
GG60	2.31 58.67	1.20 30.48	.60 15.24	.125 3.18	2.062 52.37	.30 7.62	.53 13.46	.63 16.00	—	—	—	—	—	—	—	—	—	—	75.0	A10, D10
HH68	9.31 236.47	1.60 40.64	3.57 90.68	8.84 224.54	.25 6.35	.88 22.35	.36 9.14	.160 4.06	.34 8.64	.69 17.53	.54 13.72	.66 16.76	8.34 211.84	.33 8.38	.06 1.52	—	—	—	1090.0	A10, A18, D10
JJ77	1.50 38.10	1.13 28.70	.97 24.64	.50 12.70	.155 3.94	2.345 59.56	.14 3.56	.850 21.59	2.50 63.50	.10 2.54	.44 11.18	.75 19.05	.63 16.00	.54 13.72	.37 9.40	.43 10.92	.150 3.81	.73 18.54	50.0	A6, A11, A18, D17
KK81	.30 7.62	.27 6.86	.23 5.84	.010 .25	.042 1.07	.020 .51	.100 2.54	.05 1.27	.05 1.27	.035 .89	.036 .91	.26 6.60	.575 14.61	—	—	—	—	—	.50	A13, E2, F1
LL85	1.43 36.32	.58 14.73	.75 19.05	—	—	—	—	—	—	—	—	—	—	—	—	—	—	—	21.5	A9, D18
LL86	1.19 30.23	.58 14.73	.51 12.95	—	—	—	—	—	—	—	—	—	—	—	—	—	—	—	14.0	A9, D19
LL87	1.43 36.32	.82 20.83	.68 17.27	—	—	—	—	—	—	—	—	—	—	—	—	—	—	—	48.5	A9, D20
LL561	.58 14.73	.36 9.14	.36 9.14	—	—	—	—	—	—	—	—	—	—	—	—	—	—	—	4.0	A34, D19
LL604	.55 13.97	.36 9.14	.33 8.38	—	—	—	—	—	—	—	—	—	—	—	—	—	—	—	4.0	A34, D27
LL718	1.10 27.94	.69 17.53	.68 17.27	—	—	—	—	—	—	—	—	—	—	—	—	—	—	—	30.0	A37, D20
NN92	3.66 92.96	3.25 82.55	2.13 54.10	.25 6.35	3.16 80.26	.38 9.65	2.50 63.50	.156 3.96	.72 18.29	.64 16.26	.74 18.80	1.78 45.21	2.30 58.42	.125 3.18	.50 12.70	2.66 67.56	—	—	440.0	A7, A8, A18, D6
PP94	.360 9.14	.250 6.35	.25 6.35	.016 .41	.020 .51	.04 1.02	.200 5.08	—	—	—	—	—	—	—	—	—	—	—	1.5	A26, C3
PP120	.50 12.70	.21 5.33	.150 3.81	.016 .41	.020 .51	.04 1.02	.300 7.62	—	—	—	—	—	—	—	—	—	—	—	1.5	A12, C3
PP163	.360 9.14	.250 6.35	.350 8.89	.016 .41	.020 .51	.040 1.02	.200 5.08	—	—	—	—	—	—	—	—	—	—	—	2.9	A12, C3
PP230	.50 12.70	.250 6.35	.240 6.10	.016 .41	.020 .51	.04 1.02	.300 7.62	—	—	—	—	—	—	—	—	—	—	—	1.8	A12, C3
QQ95	.500 12.70	.250 6.35	.25 6.35	.016 .41	.020 .51	.04 1.02	.300 7.62	.150 3.81	.075 1.91	—	—	—	—	—	—	—	—	—	3.5	A12, C3
QQ96	.600 15.24	.250 6.35	.25 6.35	.016 .41	.020 .51	.04 1.02	.400 10.16	.200 5.08	.100 2.54	—	—	—	—	—	—	—	—	—	4.0	A12, C3
RR93	4.06 103.12	1.60 40.64	2.125 53.98	3.56 90.42	.25 6.35	.88 22.35	.36 9.14	.160 4.06	.4 10.16	.69 17.53	.58 14.73	.66 16.76	3.13 79.50	.8 20.32	.06 1.52	.33 8.38	—	—	350.0	A10, A18, D9

tolerance .x±.1 .xx±.03 .xxx±.015 inch

oz. = grams x.0353

\* NOTES:

A. MATERIAL AND FINISH

- A6. Case material: aluminum alloy. Finish: blue paint over iridite.
- A7. Case material: aluminum alloy. Finish: case black paint. Heat sink: black anodize. Baseplate iridite per MIL-C-5541.
- A8. Case material: aluminum alloy. Finish: case iridite. Heat sink: black anodize.
- A9. Case material: brass. Finish: nickel plate.
- A10. Case material: aluminum alloy. Finish: grey paint or yellow iridite.
- A11. Case material: aluminum alloy. Finish: blue anodized.
- A12. Header and lead finish: gold plate per MIL-G-45204. Case material: Nickel
- A13. Case material: plastic. Lead Finish: tin-lead plate.
- A18. Mounting bracket finish: iridite or clear anodize.
- A26. Header material: C.R.S., pin material: #52 alloy; finish: electro tin, hot-oil flowed. Cover material: nickel.
- A32. Case material: Stainless steel, passivated.
- A34. Case material: Brass, Finish: Gold plate.
- A37. Case material: Brass, Finish: Tri-metal (Cu/Sn/Zn) plate.

C. MARKING

- C3. For Pin designations see specification data sheet.

D. CONNECTORS

- D6. Connectors: Female SMA only. Male SMA available on request, consult factory.
- D9. Connectors: BNC standard. TNC or Female SMA on request, consult factory.
- D10. Connectors: BNC standard. SMA on request, consult factory.
- D11. Connectors: Please specify: Type N or SMA.
- D12. Connectors: Male BNC, Female BNC standard. Other combinations with SMA, TNC available on request, consult factory.
- D13. Connectors: Male SMA, Female SMA only.
- D14. Connectors: Male N, Female N standard. Combinations with BNC, SMA, TNC available on request, consult factory.
- D17. Connectors: Female SMA only.
- D18. Connectors: Male BNC only.
- D19. Connectors: Male SMA only.
- D20. Connectors: Male Type N only.
- D24. Connectors: female BNC standard. Type N or SMA consult factory.
- D27. Connectors: female SMB only.

E. SPECIAL TOLERANCES

- E2. Lead width ±.010; lead thickness ±.005 inch.

F. PACKAGING

- F1-29. Tape and reel packaging available. See Tape and Reel Packaging Information for details. To order Tape & Reel version add -TR suffix to model.



Distribution Centers NORTH AMERICA 800-654-7949 • 417 335-5935 • Fax 417-335-5945 • EUROPE 44-1252-832600 • Fax 44-1252-837010

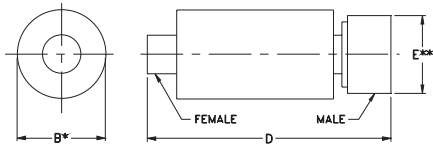
INTERNET <http://www.minicircuits.com>

P.O. Box 350166, Brooklyn, New York 11235-0003 (718) 934-4500 Fax (718) 332-4661

ISO 9001 CERTIFIED

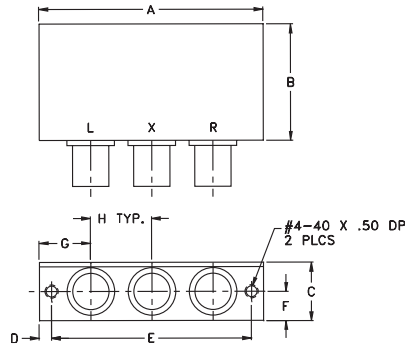
OUTLINE DRAWINGS

FF

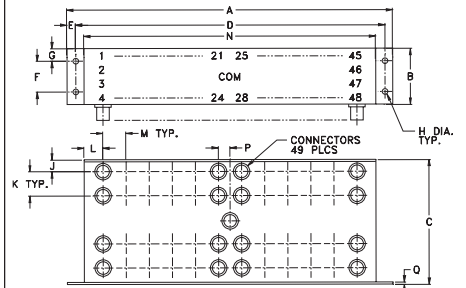


\* MAX FOR FF58, 659, 704, 747  
 \*\* ACROSS FLATS FOR FF56, 99, 658, 659, 704

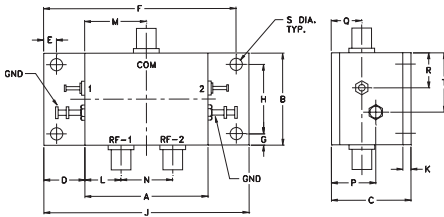
GG



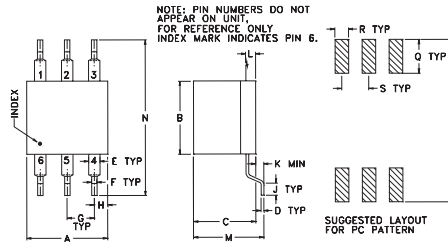
HH



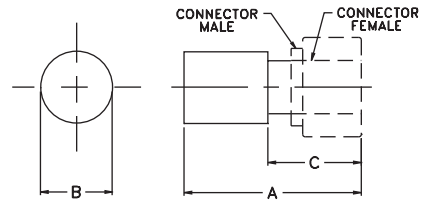
JJ



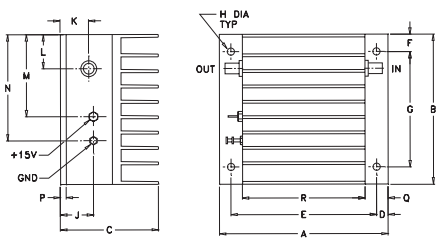
KK



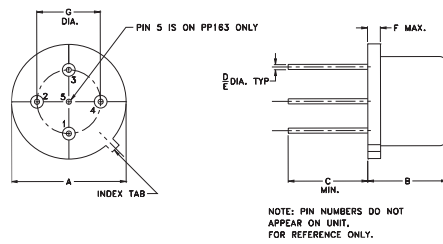
LL



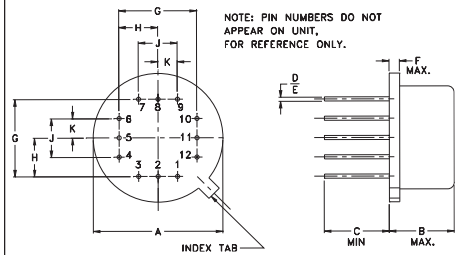
NN



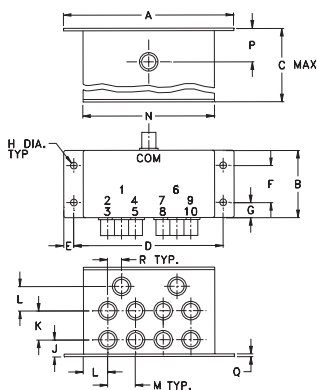
PP



QQ



RR



The Design Engineers Search Engine  
 Provides Actual Data Instantly  
 At: <http://www.minicircuits.com>

In Stock... Immediate Delivery  
 For Custom Versions Of Standard Models  
 Consult Our Applications Dept.

